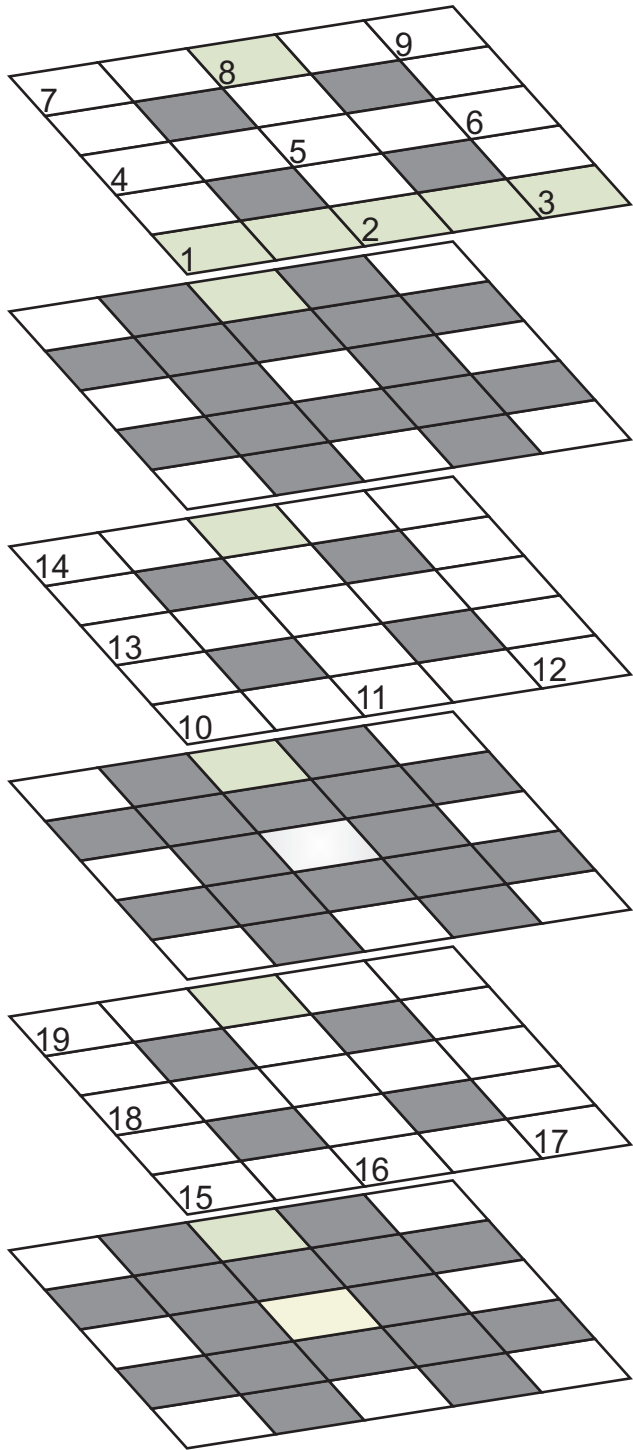


August Extra 2012 Sirius

The graphic by Jane is a visual clue to 1ac,8d and theme for the puzzle. This puzzle is a 3D jigsaw with one snake. Clues do not have directions but are presented in alphabetical order of their solutions.



(6,5)

Graphic by Jane

MON	TUES	WED	THURS	FRI	SAT	SUN
		1 Conductor holds it out to stay at the crease (5)	2 Ground-state function (5)	3 Mount cold leg perhaps (5)	4 Los Angeles mythical bird turns a pink-orange colour (5)	5 Talk about dropping small projectile (6)
6 WW2 German fast craft like <i>The Queen Elizabeth</i> ? (1-4)	7 Talk about setter's frivolities (5)	8 Lose temperature and leave snuffle behind (2,4)	9 Target centres of excellence to find measure of nation's 1ac success (5)	10 Damp squib sent in container for playful Norwegian (5)	11 Queue for new tablecloths for example (5)	12 Capital E as in England? (6)
13 Race to get into toilet is a chancy game (5)	14 Attract about a hundred pounds of filthy money (5)	15 Riotous loud spirit of the games in old Rome (7)	16 Words of song from liars we hear (6)	17 Gong sounds like a fiddle (5)	18 Small note made at meeting (6)	19 "One misty, _____, morning when cloudy was the weather" (6)
20 24's rival in books about Herriot perhaps (5)	21 Prefer rodent belonging to female. Quite! (6)	22 Return stopwatch to zero perhaps and relax about start of event (5)	23 Setter drops off sausage in salutation (5)	24 Lord of the rings? (3,3)	25 Colour of Long John's? (6)	26 Strike a chord with strange heavenly man at the start (5)
27 Starts to turn radio up running Olympics in Cornwall (5)	28	29	30	31		Aug Extra 2012

Non-Chambers
One Look
Dictionary
(Websters 1913)

World Championship Calendar Puzzles 2012

August Extra - Sirius

Entrants to the world championship are 3D Calendar Puzzle 2012 owners (printed or internet version) having thus donated at least £5 to BBC CiNA.

This is an extra quite challenging 3D crossword. There is a modest prize of a beautiful silk-embroidered Cash's bookmark. This will be awarded to a successful solver, drawn from the hat.

These extra competitions are free and open to all.

Name

Address

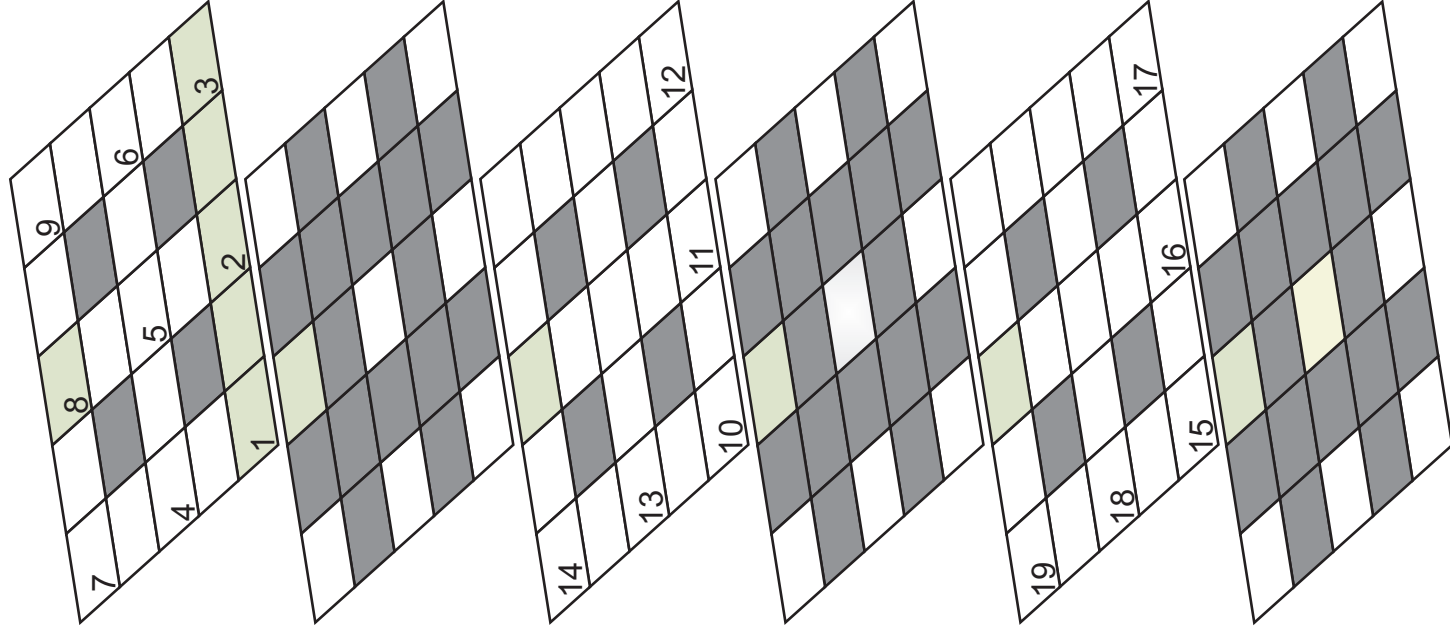
.....

.....

.....

Tel No

Email



Please return by midnight of
August 31st to:

Calendar Puzzle
PO Box 4823
Coventry
CV6 9FN

Or scan and email to Sirius

sirius@calendarpuzzles.co.uk